

## MEETING POINT TRUST LTD

Meeting Point House, Southwater Square, Town Centre, Telford, Shropshire, TF3 4HS

Telephone: (01952) 292268

Fax: (01952) 291168

E-mail: [reception@meetingpointhouse.co.uk](mailto:reception@meetingpointhouse.co.uk)

Web Site: [www.meetingpointhouse.co.uk](http://www.meetingpointhouse.co.uk)

### ROOM HIRE CHARGES 2019

(Charges per Session up to 4 Hours)

Session any 4 hours between 08:00 & 21:45 Monday to Friday / Saturday 08:30 to 17:30



#### WALKER ROOM

Seating Capacity

(13.5m x 10.5m – 141.75 sq m)

**Rate B** £91.50

Theatre 120

Boardroom 40

**Rate C** £68.50

Cabaret 80

U Tables 40

Circle 50



#### TUDOR ROOM

Seating Capacity

(7.46m x 6.7m – 49.98 sq m)

**Rate B** £49.00

Theatre 30

Boardroom 20

**Rate C** £35.00

Cabaret 20

U Tables 16

Circle 20

U Chairs 20



#### QUAKER ROOM

Seating Capacity

(9.75m x 7.9m - 77sq m)

**Rate B** £78.00

Theatre 80

Boardroom 30

**Rate C** £55.50

Cabaret 30

U Tables 24

Circle 25

U Chairs 25



#### NEWSON ROOM (IT Suite)

Seating Capacity

(7.9m x 6.7m 52.93 sq m)

**Rate B** £56.50

Computers 16

Boardroom 20

**Rate C** £40.50



#### SOUTHWATER ROOM

Seating Capacity

(7.9m x 6.7m - 52.93 sq m)

**Rate B** £56.50

Theatre 40

Boardroom 20

**Rate C** £40.50

Circle 20

U Tables 20

U Chairs 20



#### JUBILEE ROOM

Seating Capacity

(6.7m x 6.4m – 42.88 sq m)

**Rate B** £40.50

Theatre 30

Boardroom 20

**Rate C** £29.00

Cabaret 15

U Tables 17

Circle 18

U Chairs 18



#### WREKIN ROOM

Seating Capacity

(4.25m x 2.97m - 12.62 sq m)

**Rate B** £27.50

Boardroom 10

Surgery 1 to 1

**Rate C** £20.00

Circle Chairs 10

Interview



#### HEREFORD ROOM

Seating Capacity

(4.25m x 2.97m – 12.62 sq m)

**Rate B** £27.50

Boardroom 10

Surgery 1 to 1

**Rate C** £20.00

Circle Chairs 10

Interviews



#### LICHFIELD ROOM

Seating Capacity

(6.09m x 4.25m - 25.88 sq m)

**Rate B** £44.50

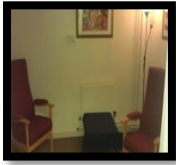
Boardroom 18

**Rate C** £32.00

**MORE ROOMS OVERLEAF**



<b><u>SESSIONAL 1</u></b>	<b>Rate B</b>	<b>£18.00</b>	<b>Rate C</b>	<b>£15.00</b>
Seating Capacity		3		



<b><u>SESSIONAL 2</u></b>	<b>Rate B</b>	<b>£18.00</b>	<b>Rate C</b>	<b>£15.00</b>
Seating Capacity	<b>Boardroom</b>	4		
	<b>Interviews</b>			



<b><u>SESSIONAL 4</u></b>	<b>Rate B</b>	<b>£27.50</b>	<b>Rate C</b>	<b>£20.00</b>
Seating Capacity	<b>Boardroom</b>	10		
	<b>Theatre</b>	18		

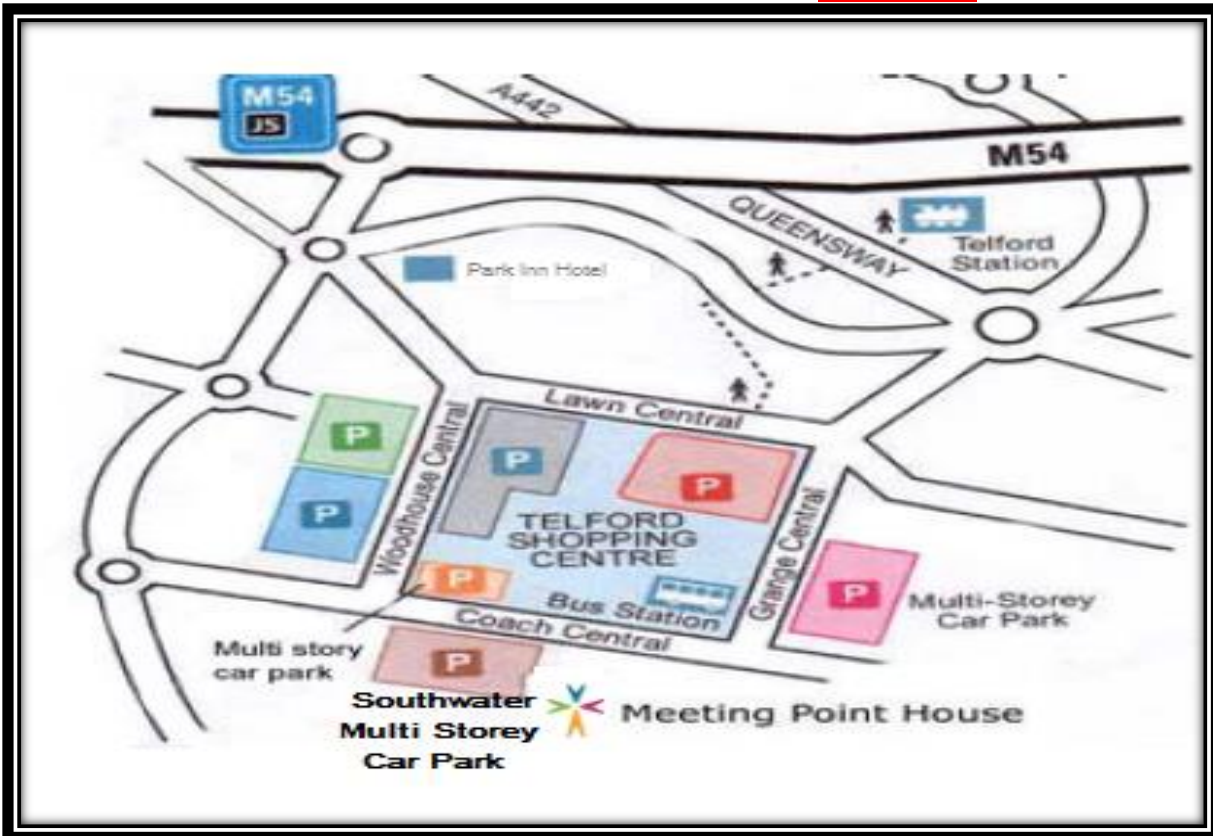
<b><u>SESSIONAL 5</u></b>	<b>Rate B</b>	<b>£40.50</b>	<b>Rate C</b>	<b>£29.00</b>
Seating Capacity	<b>Boardroom</b>	18	<b>Theatre</b>	30
(7.50m x 4.03 - 30.22 sq m)	<b>Horseshoe t</b>	14		

**\*BOOKINGS FOR THE CHAPEL ARE ONLY ACCEPTED FROM GROUPS AFFILIATED TO, OR APPROVED BY TELFORD CHRISTIANS TOGETHER.**

<b><u>CHAPEL</u></b>	<b>Rate B</b>	<b>£56.50 (Up to 4 hour Session)</b>	<b>Rate C</b>	
Seating Capacity	<b>Theatre</b>	80	<b>Registered Charities &amp; Religious Groups</b>	

**A full Catering Service is available. Please visit our Web Site or contact us for further details**

**PLEASE NOTE THAT ALL CHARGES ARE EXCLUSIVE OF VAT**



<https://www.google.co.uk/maps/@52.6741726,-2.4483667,17z>

**For more detailed directions, please visit the following website:**

<http://www.mapquest.com>