

MEETING POINT TRUST LTD

Meeting Point House, Southwater Square, Town Centre, Telford, Shropshire, TF3 4HS

Telephone: (01952) 292268

Fax: (01952) 291168

E-mail: reception@meetingpointhouse.co.uk

Web Site: www.meetingpointhouse.co.uk

ROOM HIRE CHARGES 2018

(Charges per Session up to 4 Hours)

Session any 4 hours between 08:00 & 21:45 Monday to Friday / Saturday 08:30 to 17:30



WALKER ROOM

Seating Capacity

(13.5m x 10.5m – 141.75 sq m)

Rate B £87.15

Theatre 120

Boardroom 40

Rate C £59.20

Cabaret 80

U Tables 40

Circle 50



TUDOR ROOM

Seating Capacity

(7.46m x 6.7m – 49.98 sq m)

Rate B £46.65

Theatre 30

Boardroom 20

Rate C £32.30

Cabaret 20

U Tables 16

Circle 20

U Chairs 20



QUAKER ROOM

Seating Capacity

(9.75m x 7.9m - 77sq m)

Rate B £74.10

Theatre 80

Boardroom 30

Rate C £54.55

Cabaret 30

U Tables 24

Circle 25

U Chairs 25



NEWSON ROOM (IT Suite)

Seating Capacity

(7.9m x 6.7m 52.93 sq m)

Rate B £53.90

Computers 16

Boardroom 20

Rate C £38.60



SOUTHWATER ROOM

Seating Capacity

(7.9m x 6.7m - 52.93 sq m)

Rate B £53.90

Theatre 40

Boardroom 20

Rate C £38.60

Circle 20

U Tables 20

U Chairs 20



JUBILEE ROOM

Seating Capacity

(6.7m x 6.4m – 42.88 sq m)

Rate B £38.70

Theatre 30

Boardroom 18

Rate C £23.15

Cabaret 15

U Tables 17

Circle 18

U Chairs 18



WREKIN ROOM

Seating Capacity

(4.25m x 2.97m - 12.62 sq m)

Rate B £26.30

Boardroom 10

Surgery 1 to 1

Rate C £15.10

Circle Chairs 10

Interview



HEREFORD ROOM

Seating Capacity

(4.25m x 2.97m – 12.62 sq m)

Rate B £26.30

Boardroom 10

Surgery 1 to 1

Rate C £15.10

Circle Chairs 10

Interviews



LICHFIELD ROOM

Seating Capacity

(6.09m x 4.25m - 25.88 sq m)

Rate B £42.20

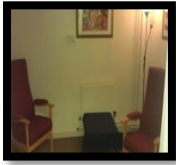
Boardroom 18

Rate C £31.50

MORE ROOMS OVERLEAF



<u>SESSIONAL 1</u>	Rate B	£16.90	Rate C	£15.10
Seating Capacity		3		



<u>SESSIONAL 2</u>	Rate B	£16.90	Rate C	£15.10
Seating Capacity	Boardroom	4		
	Interviews			



<u>SESSIONAL 4</u>	Rate B	£26.30	Rate C	£15.10
Seating Capacity	Boardroom	10		
	Theatre	18		

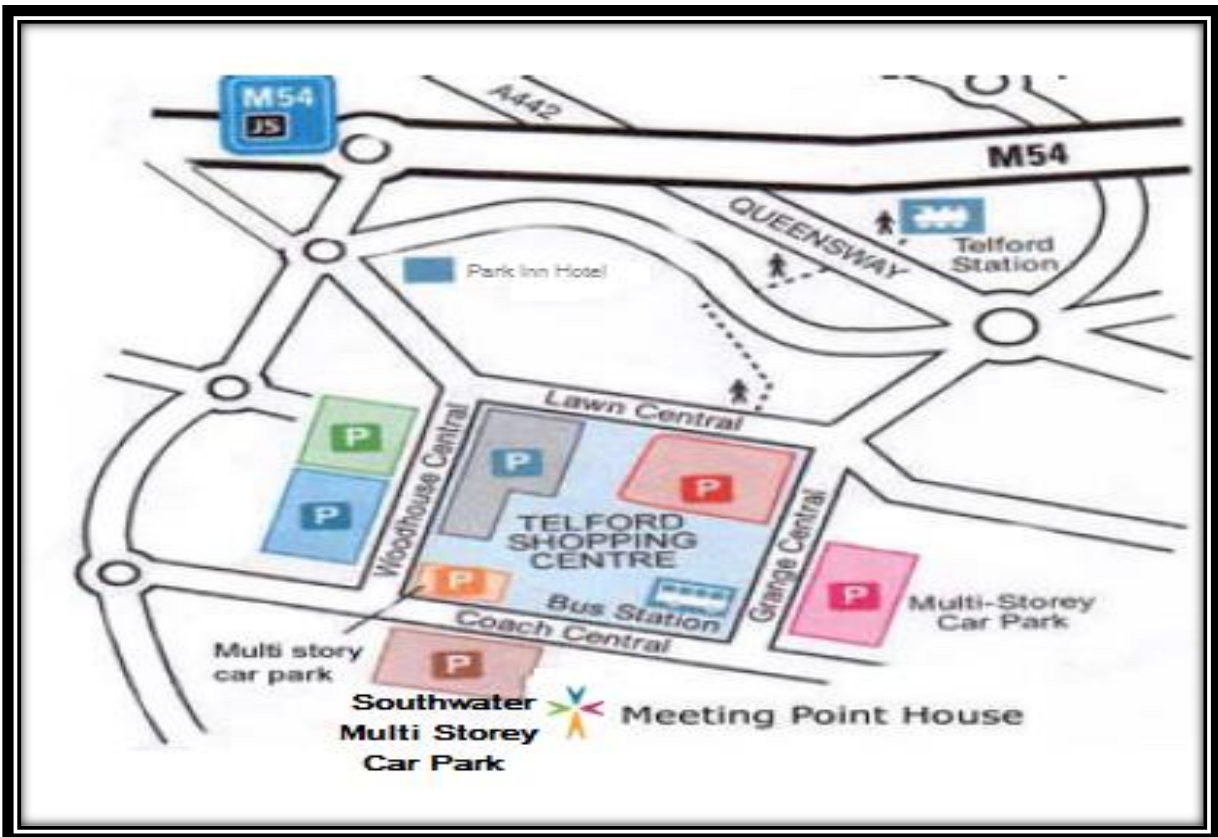
<u>SESSIONAL 5</u>	Rate B	£38.70	Rate C	£23.15
Seating Capacity	Boardroom	18	Theatre	30
(7.50m x 4.03 - 30.22 sq m)	Horseshoe	14		

***BOOKINGS FOR THE CHAPEL ARE ONLY ACCEPTED FROM GROUPS AFFILIATED TO, OR APPROVED BY TELFORD CHRISTIANS TOGETHER.**

<u>CHAPEL</u>	Rate B	£53.80 (Up to 4 hour Session)	Rate C	
Seating Capacity	Theatre	80	Registered Charities & Religious Groups	

A full Catering Service is available. Please visit our Web Site or contact us for further details

PLEASE NOTE THAT ALL CHARGES ARE EXCLUSIVE OF VAT



<https://www.google.co.uk/maps/@52.6741726,-2.4483667,17z>

For more detailed directions, please visit the following website:

<http://www.mapquest.com>